

PRODUCT DATASHEET

L 13 W/765

Basic T5 Short | Tubular fluorescent lamps 16 mm, short, with G5 base



AREAS OF APPLICATION

- Shops
- Supermarkets and department stores
- Public buildings

PRODUCT BENEFITS

- Ideal for cost-effective creative illumination and decoration
- Very good luminous flux maintenance throughout the life of the lamp
- Slim and compact

PRODUCT FEATURES

- Average lifetime: up to 10,000 h (with QUICKTRONIC ECG)



TECHNICAL DATA

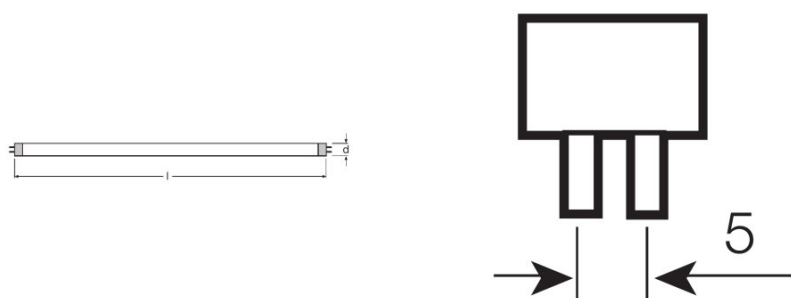
Electrical data

Rated lamp efficacy (HF data 25 °C)	Under clarification by authority and standardization body
Rated wattage	13.00 W
Nominal wattage	13.00 W

Photometrical data

Rated lamp efficacy (standard condition)	55 lm/W
Color rendering index Ra	≥70
Rated luminous flux	720 lm
Luminous flux at 25 °C	720 lm
Light color	6500
Rated color temperature	6500 K
Nominal luminous flux	720 lm
Light color (designation)	Cool Daylight
Rated LLMF at 2,000 h	0.75
Rated LLMF at 4,000 h	0.69
Rated LLMF at 6,000 h	0.66
Rated LLMF at 8,000 h	0.64
Color temperature	6500 K
Luminous flux	720 lm
Color rendering index Ra	≥70

Dimensions & weight



Tube diameter	16 mm
Length	517.0 mm
Length with base excl. base pins/connection	517.00 mm
Diameter	16.0 mm
Maximum diameter	16.0 mm

Temperatures & operating conditions

Rated ambient temp.w.max.luminous flux	35.0 °C
-----------------------------------------------	---------

Lifespan

Lifespan	8000 h ¹⁾
Rated lamp survival factor at 2,000 h	0.99
Rated lamp survival factor at 4,000 h	0.99
Rated lamp survival factor at 6,000 h	0.95
Rated lamp survival factor at 8,000 h	0.81
Operation mode LLMF/LSF	HF
Rated lamp life time	10000 h
Nominal lamp life time	10000 h

¹⁾ With CCG/LLCG

Additional product data

Base (standard designation)	G5
Mercury content	2.5 mg
Show WEEE picto	Yes

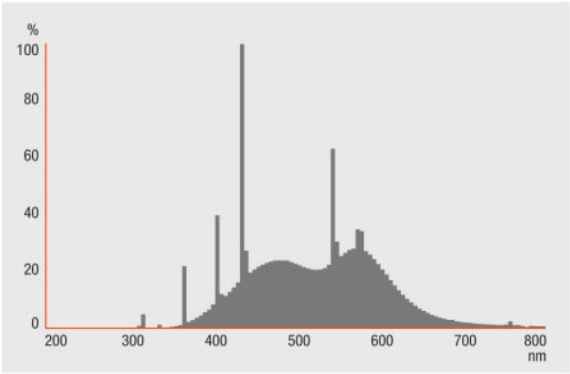
Capabilities

Suitable for indoor	Yes
----------------------------	-----

Certificates & standards

Energy efficiency class	A
Energy consumption	15 kWh/1000h

Light Distribution



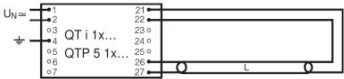
Spectral power distribution

SYSTEM GUARANTEE

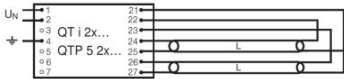
- OSRAM System+ Guarantee in combination with OSRAM ECGs

SAFETY ADVICE

In case of lamp breakage: www.ledvance.com/brokenlamp



Circuit diagram



Circuit diagram

LOGISTICAL DATA

Product code	Product description	Packaging unit (Pieces/Unit)	Dimensions (length x width x height)	Volume	Gross weight
4050300035536	L 13 W/765	Shipping carton box 25	546 mm x 118 mm x 105 mm	6.76 dm ³	1641.67 g

The mentioned product code describes the smallest quantity unit which can be ordered. One shipping unit can contain one or more single products. When placing an order, for the quantity please enter single or multiples of a shipping unit.

DISCLAIMER

Subject to change without notice. Errors and omission excepted. Always make sure to use the most recent release.

Basic T5 Short | Tubular fluorescent lamps 16 mm, short, with G5 base

Product name	Product name ECG	EAN	Nominal current	Nominal wattage + Power loss	Luminous flux at 35 °C	Number of lighting outlets
L 13 W/765	QT-ECO 1x4-16/220-240 L	4050300660370	0.08 A	15.00 W	950 lm	1
	QT-ECO 1x4-16/220-240 S	4050300638584	0.08 A	15.00 W	950 lm	1